



27/7-15 McGill Street Lewisham NSW

1  1  1 

UNDER CONTRACT!

WILL BE SOLD!

Strategically located just 50m to Lewisham Light Rail and a leisurely 3-minute stroll to Lewisham Train Station. Bus/ train/ light rail will have you in Sydney CBD or where you need to go in no time at all.

Award winning cafes, restaurants, providores are all on your doorstep. Across the road is an incoming retail precinct which will provide additional day to day convenience.

Features:

[For full version visit the website](https://www.365propertygroup.com.au/8031191)

**Type** : Unit  
**Price** : FOR SALE | WILL BE SOLD  
**View** : <https://www.365propertygroup.com.au/8031191>



**Anson Kolb**  
0403429845



**Stefan Jones**  
0403429845

THE INTERSECTION

THIRD FLOOR U27

ONE BEDROOM

Internal	48m <sup>2</sup>
External	7m <sup>2</sup>
<b>TOTAL</b>	<b>55<sup>2</sup></b>
Car Space	1
Storage	1

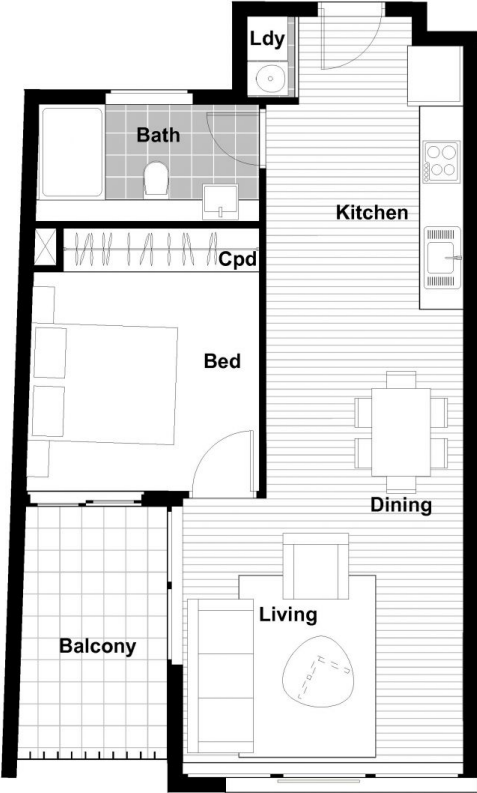


McGILL STREET



Anson Kolb 0403 429 845 | Stefan Jones 0422 681 795

7 McGill Street, Lewisham, NSW 2049  
[intersectionlewisham.com.au](http://intersectionlewisham.com.au)



DISCLAIMER None of the information contained in this document should be relied on or construed as advice, a recommendation or offer for the sale of property. The developer, its agencies and related entities do not make any representations or give any warranties that the information set out in this document is or will remain accurate or complete or all times and disclaim all liability for harm, loss, costs, or damages which arises in connection with any use or reliance on the information. Designed by madeagency.com

