

21/157 Victoria Road Gladesville NSW

3 2 3

Located in the heart of vibrant Gladesville Village, with an abundance of everyday shopping and eateries at your doorstep, this modern apartment represents contemporary living, amongst a boutique security building.

Positioned within the highly esteemed "Victoria Apartments" building and benefiting from an elevated due East, South and South/West panoramic outlook.

A truly generous floor plan allows for true open plan living/dining, opening onto a large all-weather alfresco terrace.

Features include:

Type : Apartment

View : <https://www.365propertygroup.com.au/7765946>

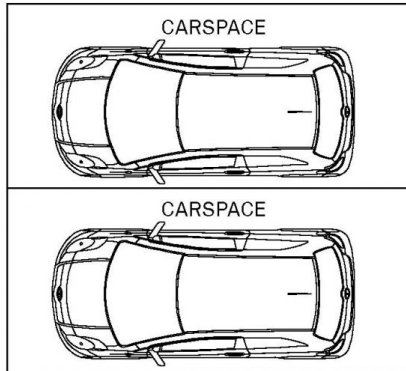


Anson Kolb
0403429845

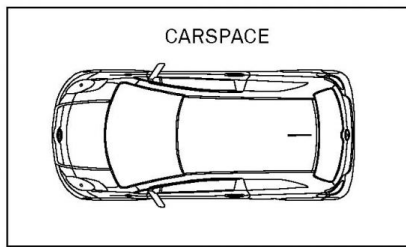


Stefan Jones
0403429845

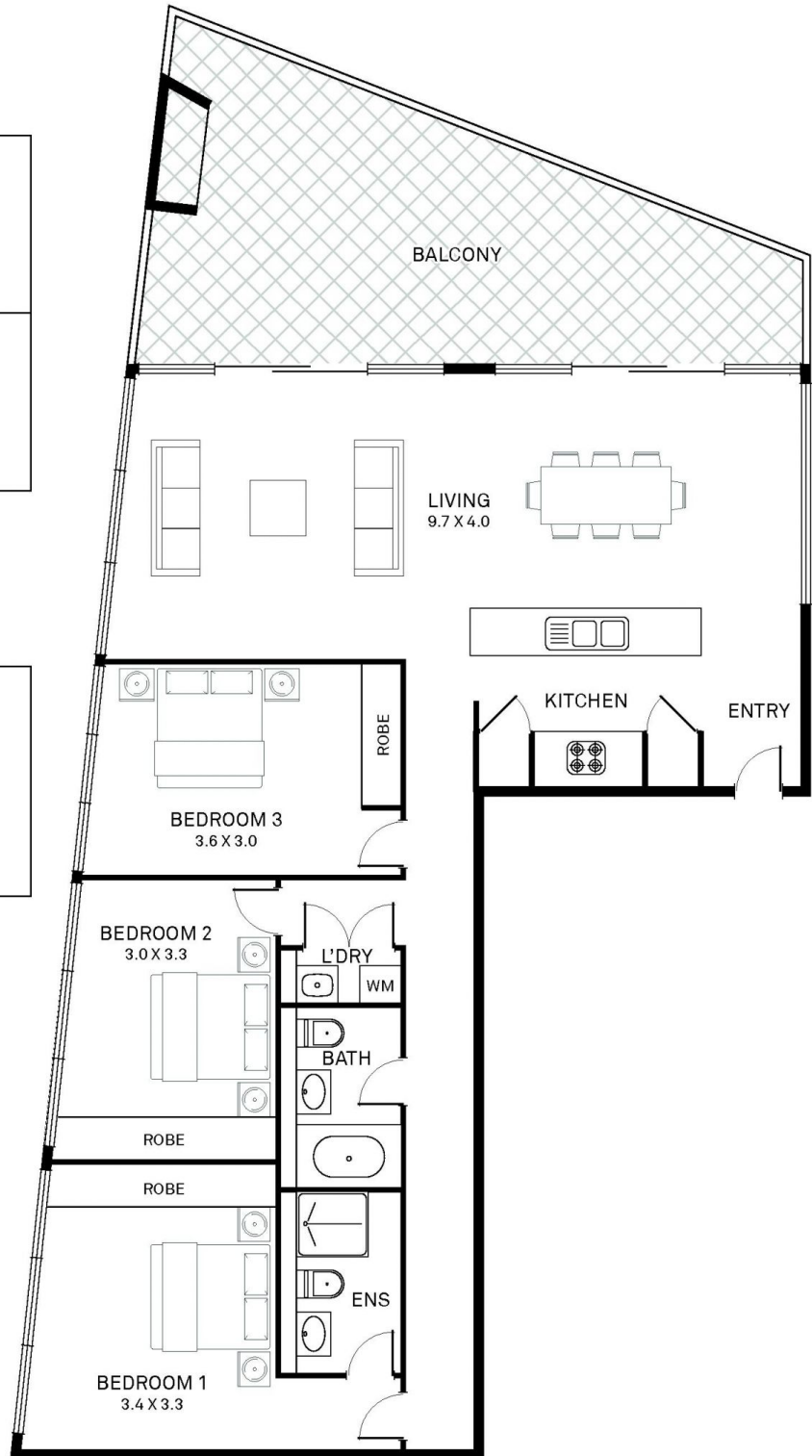
[For full version visit the website](https://www.365propertygroup.com.au)



(NOT IN POSITION)



LOWER GROUND FLOOR



Storage	-	8 m ²
Parking	-	3 car spaces
Area Internal	-	115 m ²
Area External	-	27 m ²
Total Area	-	192 m ²

21/157 Victoria Rd, Gladesville

