



**27/157 Victoria Road Gladesville NSW**

2 2 1

Located within the heart of the vibrant Gladesville village, this extra-large courtyard apartment is quietly positioned at the rear of the building benefiting from very generous north facing sunlit terrace.

Built circa 6 years ago, this apartment benefits from a very generous internal & external floor plan that you don't get with brand new apartments.

Apartment features:

- Large internal & external floor plan
- Designer kitchen with stainless steel gas appliances
- Oversized North facing private courtyard
- Master bedroom with ensuite
- Large main bathroom

**Type** : Apartment

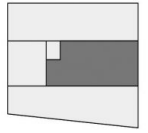
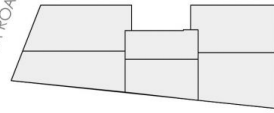
**View** : <https://www.365propertygroup.com.au/7732631>



**Cassandra Favorito**  
02 8339 8900

[For full version visit the website](https://www.365propertygroup.com.au)

VICTORIA ROAD



LEVEL	GF
STORAGE	10
PARKING	01
AREA INTERNAL	86 SQM
AREA EXTERNAL	54 SQM
TOTAL AREA	140 SQM



157 VICTORIA ROAD, GLADESVILLE, N S W

apartment

27

0 1.0 2.0 5.0 M

THE PARTICULARS OF THIS HANDOUT ARE A GENERAL OUTLINE ONLY FOR THE GUIDANCE OF INTENDING PURCHASER(S), AND DO NOT CONSTITUTE AN OFFER OR CONTRACT. ALL DESCRIPTION, DIMENSIONS, ARTISTS PERSPECTIVES, AND PHOTOGRAPHS ARE GIVEN IN GOOD FAITH, AND ARE BELIEVED TO BE CORRECT, BUT ANY INTENDING PURCHASERS SHOULD NOT RELY ON THEM AS STATEMENTS OR PRESENTATIONS OF FACT, BUT MUST SATISFY THEMSELVES BY INSPECTION OR OTHERWISE. CHANGES TO DETAILS OF THE PROJECT MAY OCCUR DURING THE DEVELOPMENT APPLICATION PROCESS AND THE BUILDING PROGRAM.