



7/23 Wilson Street Botany NSW

3 3 2

Architecturally designed by renowned architect Brewster Murray and located within a boutique high quality development of just 8 homes, no expense has been spared in the quality use of materials and finishes.

Encompassing three spacious levels of living, a clever floor plan allows for open plan living dining & flexible indoor/outdoor flow.

Ideally positioned to be moments from everything Botany has to offer with easy access to the CBD and airport, walking distance to local parks and recreation reserves, Botany Road shops and cafes and just a short drive to Westfield Eastgardens and quality local schooling options.

+ 3 double bedrooms architecturally designed urban residence

Type : Townhouse

Price : \$ 1,900,000

View : <https://www.365propertygroup.com.au/7732495>



Stefan Jones
0403429845



Anson Kolb
0403429845

[For full version visit the website](https://www.365propertygroup.com.au)



WILSON RESIDENCES
BOTANY

23 WILSON ST BOTANY

RESIDENCE 7

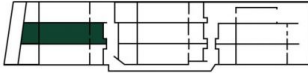
 3 + PARENTS RETREAT/OFFICE

 3

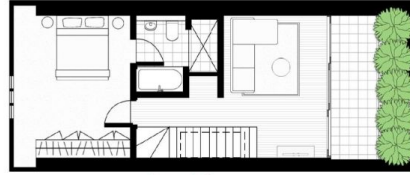
 2

BASEMENT STORAGE

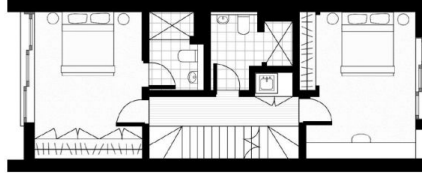
TOTAL INTERNAL : 148 m²
TOTAL EXTERNAL : 43 m²



This document has been produced solely for the information of potential purchasers to assist them in deciding whether they are sufficiently interested in the properties to proceed further. The information contained in this material has been produced in good faith with due care. We do not warrant the accuracy of any information contained herein and do not accept liability for negligence, any error or discrepancy, or otherwise in the information. This document may be subject to change without notice.



Level 2



Level 1



Ground Floor



NORTH