



37/157 Victoria Road Gladesville NSW

2 **2** **1**

**STUNNING NORTH FACING ENTERTAINERS APT W/
CBD VIEWS + PARKING**

Located in the heart of vibrant Gladesville Village, with an abundance of everyday shopping and eateries at your doorstep, this modern apartment represents contemporary living, amongst a boutique security building.

Positioned high, within the well regarded 'Victoria Apartments' building, and offering breath-taking Sydney CBD and district views.

Sydney CBD, New Year's Eve fireworks and the lights of Vivid Sydney are on show throughout the year.

Type : Apartment

View : <https://www.365propertygroup.com.au/7732460>



Stefan Jones
0403429845

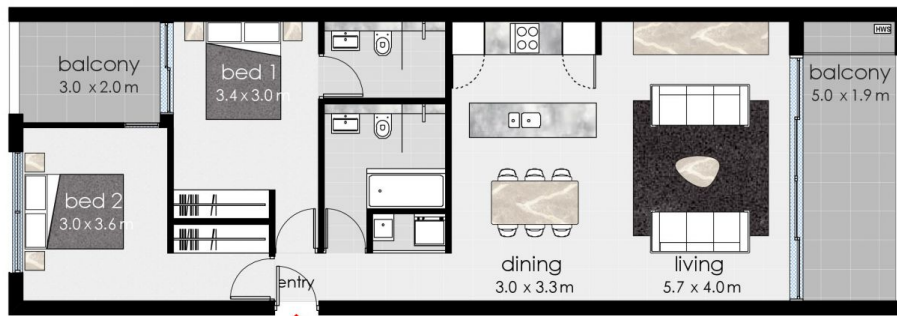
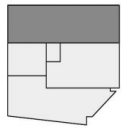
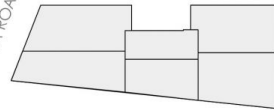


Anson Kolb
0403429845

[For full version visit the website](https://www.365propertygroup.com.au)

<https://www.365propertygroup.com.au>

VICTORIA ROAD



LEVEL	02, 03, 04, 05
STORAGE	10
PARKING	01
AREA INTERNAL	84 SQM
AREA EXTERNAL	17 SQM
TOTAL AREA	101 SQM



157 VICTORIA ROAD, GLADESVILLE, N S W

apartment 34, 37, 39, 41

0 1.0 2.0 5.0 M

THE PARTICULARS OF THIS HANDOUT ARE A GENERAL OUTLINE ONLY FOR THE GUIDANCE OF INTENDING PURCHASER(S), AND DO NOT CONSTITUTE AN OFFER OR CONTRACT. ALL DESCRIPTION, DIMENSIONS, ARTISTS PERSPECTIVES, AND PHOTOGRAPHS ARE GIVEN IN GOOD FAITH, AND ARE BELIEVED TO BE CORRECT, BUT ANY INTENDING PURCHASERS SHOULD NOT RELY ON THEM AS STATEMENTS OR PRESENTATIONS OF FACT, BUT MUST SATISFY THEMSELVES BY INSPECTION OR OTHERWISE. CHANGES TO DETAILS OF THE PROJECT MAY OCCUR DURING THE DEVELOPMENT APPLICATION PROCESS AND THE BUILDING PROGRAM.